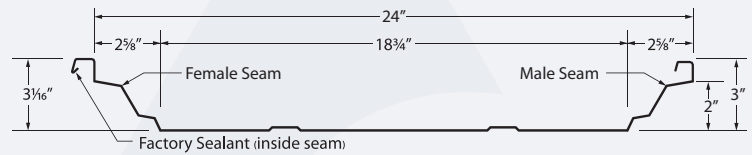
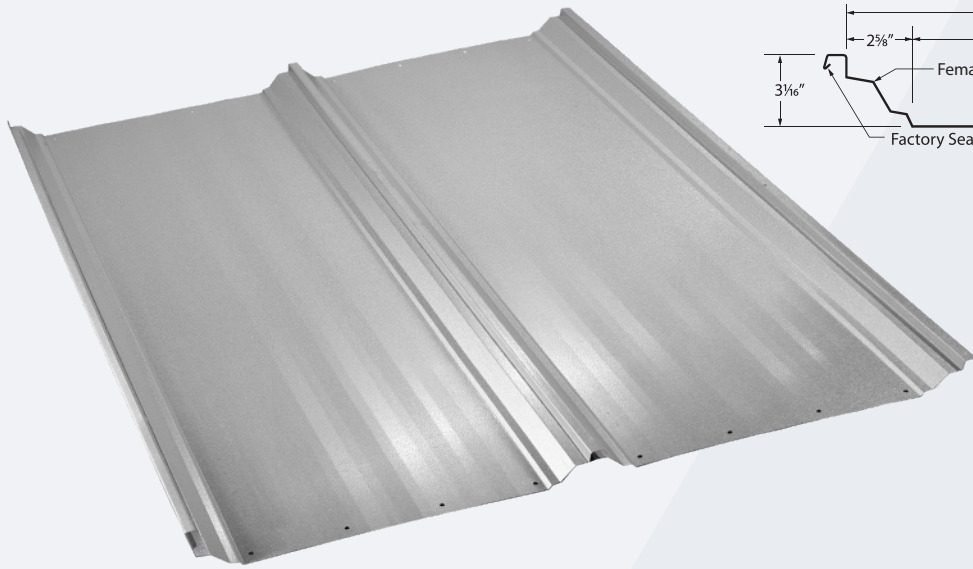


# TS-324 *Concealed Fastener Roof Panel*



The TS-324 Trapezoidal SSR System with the Double-Lok seam is installed with the recommended anchor clip, then the panels are snapped together and hand seamed at each clip location, providing added separation and uplift resistance. The Triple-Lok seam is made by running a power seamer over the Double-Lok, forming a tight seam the full length of the panel. The Triple-Lok seam becomes more tightly engaged as the panel is subjected to wind uplift loads. Where maximum wind load resistance is called for, the Quad-Lok seam is formed by using the power seamer to provide an additional fold to the Triple-Lok for the full panel length.

**Fastener:** Concealed Fastener

**Finishes:** Premium Kynar

**Metals:** Galvanized, Galvalume®

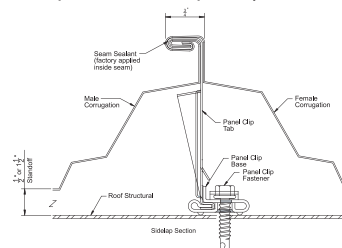
**Gauges:** 24 GA and 22 GA

**Features:**

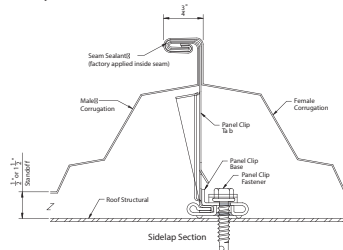
- Applies over open framing or solid substrate
- Minimum roof slope: 1/4:12
- Cut to the inch
- Self ventilating



**DoubleLok**  
Crimp seamed at clips only



**TripleLok**  
Fully seamed from end to end



**QuadLok**  
Adds final 90° bend

